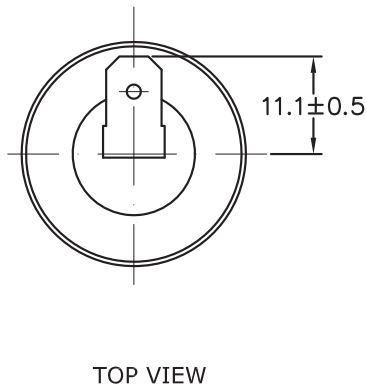
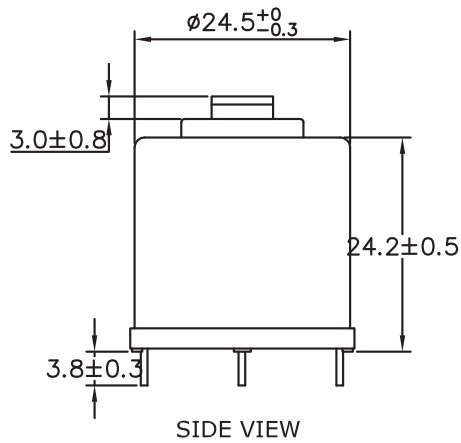
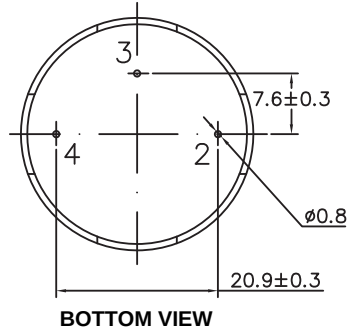
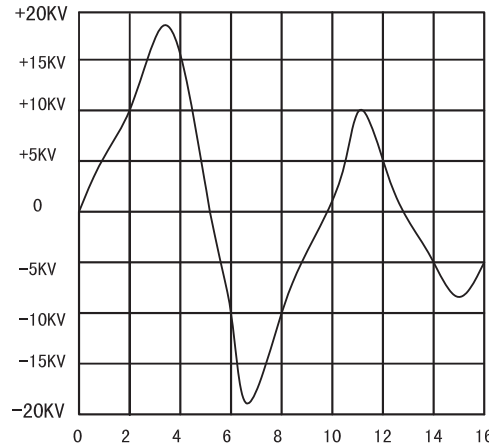


(Mark)	(Qty.)	(EC Content)	(EC Reason)	(EC No.)	(Date)	(Proposer)
△a						
△b						
△c						



When the test voltage is 220V 50Hz, such as FIG.2 voltage and pulse width.



TYPICAL WAVEFORM AT THE H.V. POINT WITH PULSE WIDTH IN THE TRANSFORMER INTO A 20PF LOAD
FIG.2

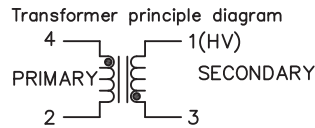
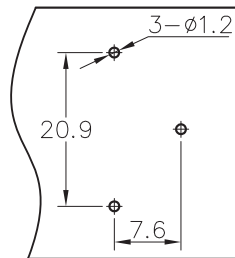


FIG. 3



NOTES:

- PRIMARY: 14± 1/2 TURN 1UEW-0.45;
- SECONDARY: 2600 TURN 1UEW-0.06;
- HYPOT 1250VAC. BETWEEN PRIMARY AND SECONDARY;
- THE USE OF TEMPERATURE - 40~85 ° C;
- FILL MATERIAL: EPOXY,VACUUM FORMED;
- PEAK PRIMARY CURRENT: 60 AMPS;
- ADDITIONAL ELECTRICAL SPEC'S.(FOR REF.ONLY)
PRIMARY: 0.037 OHMS ± 30%,5.8uH ± 15%;
SECONDARY:690 OHMS ± 30%,
140mH± 15%;
MEASURED AT 1KHZ,75° F
- SPARK VOLTAGE: >18KV(CL=20PF);
DISCHARGE PULSE:5± 2us;
- INSULATION RESISTANCE >100M OHMS;
- OUTPUT TERMINAL BY TENSION TEST,
DRAWING FORCE GREATER THAN 3kgf.cm;
- OUTPUT TERMINAL WITH A TORSION
TESTER,TORQUE GREATER THAN 8kgf.cm.

TEST CIRCUIT FOR REFERENCE ONLY

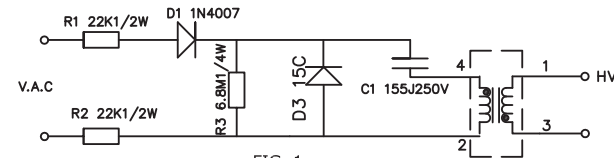


FIG. 1

NOTES: AB points between the trigger voltage is 150V

MAP	A4	PAGE	1	FIRST CORNER	PRODUCT	18RA-153	
UNIT	mm	SCALE	1:1		MATERIAL NO.		
				APPROVE	DRAWING NO.		
				CHECK	DRAWING NAME	Finished product	
				DESIGN	DRAWING NO.		1.0

GEI INC.
geicomponents.com