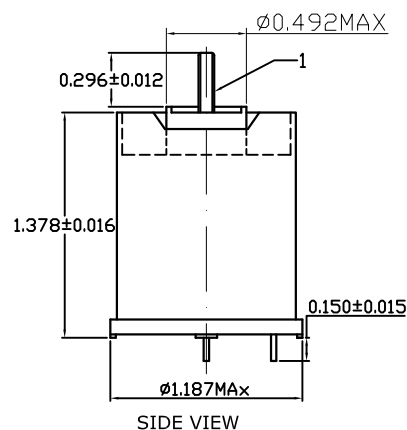
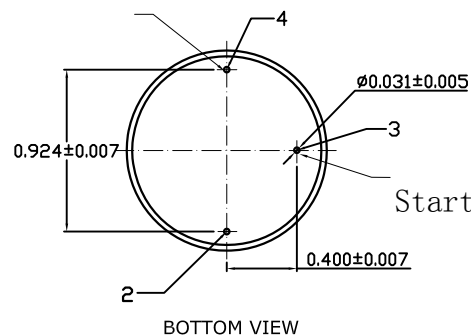
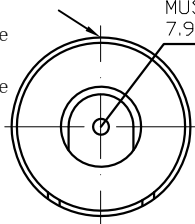


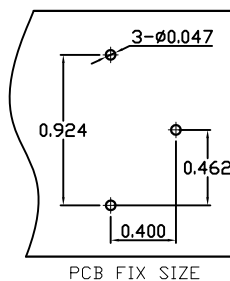
End of winding



The laser code is located directly above the secondary pin



TOP VIEW



PCB FIX SIZE

TEST CIRCUIT FOR REFERENCE ONLY

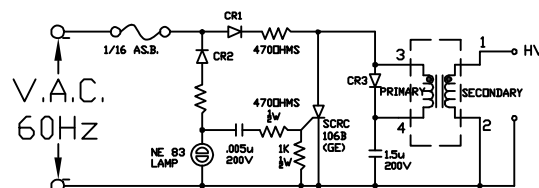
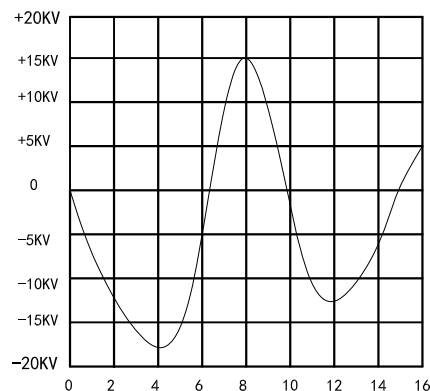


FIG. 1

When the test voltage is 110V 60Hz, such as FIG.2 voltage and pulse width.



TYPICAL WAVEFORM AT THE H.V. POINT WITH PULSE WIDTH IN THE TRANSFORMER INTO A 20PF LOAD
FIRST NEGATIVE PEAK 18±3kv

FIG. 2

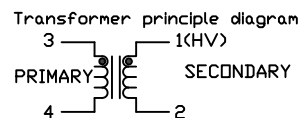
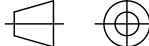


FIG. 3

(Mark)	(Qty.)	(EC Content)	(EC Reason)	(EC No.)	(Date)	(Proposer)
A						
B						
C						

NOTES:

1. PRIMARY: $23 \pm 1/2$ TURN 1UEW-0.45;
2. SECONDARY: 3850 TURN 1UEW-0.06;
3. HYPOT 1250VAC. BETWEEN PRIMARY AND SECONDARY;
4. THE USE OF TEMPERATURE - $40 \sim 85^{\circ} \text{C}$;
5. FILL MATERIAL: EPOXY, VACUUM FORMED;
6. PEAK PRIMARY CURRENT: 60 AMPS;
7. ADDITIONAL ELECTRICAL SPEC' S. (FOR REF. ONLY)
PRIMARY: $0.076 \text{ OHMS} \pm 30\%$, $0.018 \text{mH} \pm 20\%$;
SECONDARY: $1000 \text{ OHMS} \pm 30\%$, $0.47 \text{H} \pm 20\%$;
MEASURED AT 1KHz, 75°F
8. SPARK VOLTAGE: $18 \pm 3 \text{KV}$ (CL=20PF) ;
9. INSULATION RESISTANCE >100M OHMS;
10. OUTPUT TERMINAL BY TENSION TEST, DRAWING FORCE GREATER THAN 3kgf. cm;
11. OUTPUT TERMINAL WITH A TORSION TESTER, TORQUE GREATER THAN 8kgf. cm.

MAP	A4	PAGE	1	FIRST CORNER		PRODUCT	18SO-108	
UNIT	INCH	SCALE	1:1			PRODUCT NO.		
<div>GEI INC. geicomponents.com</div>				APPROVE		MATERIAL NO.		
				CHECK		FINISH	2016.11.12	
				DESIGN		DRAWING NO.		1.0