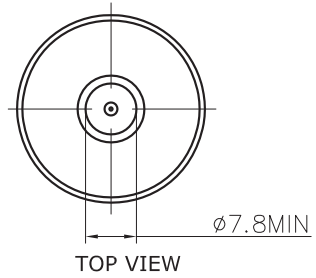
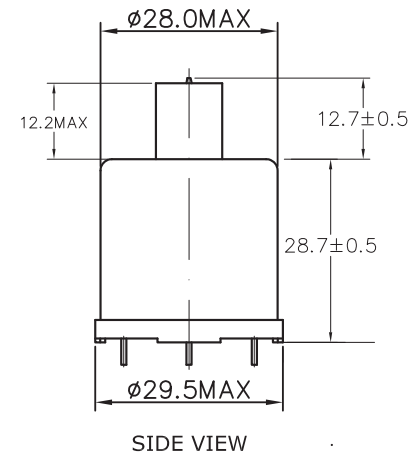
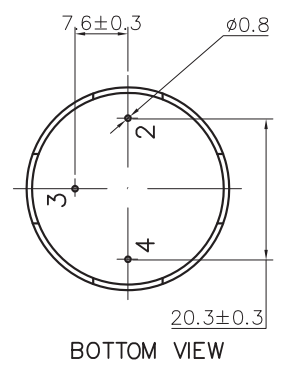
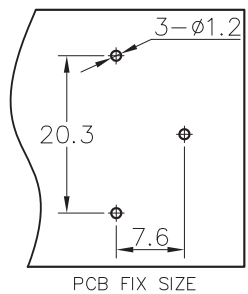
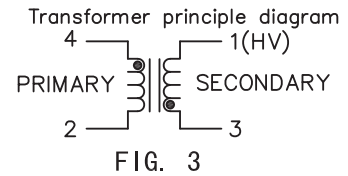
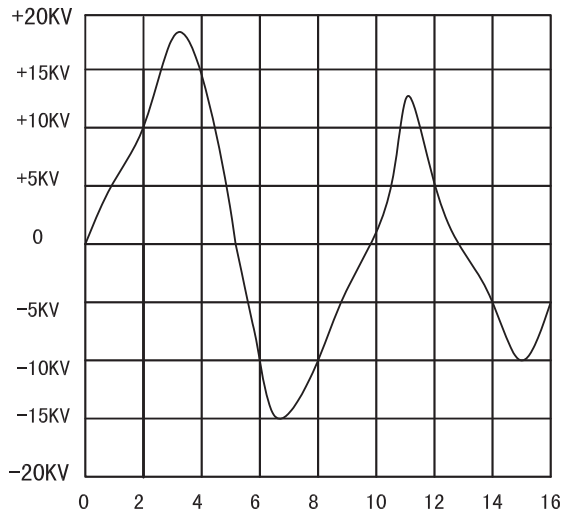


(Mark)	(Qty.)	(EC Content)	(EC Reason)	(EC No.)	(Date)	(Proposer)
△a						
△b						
△c						



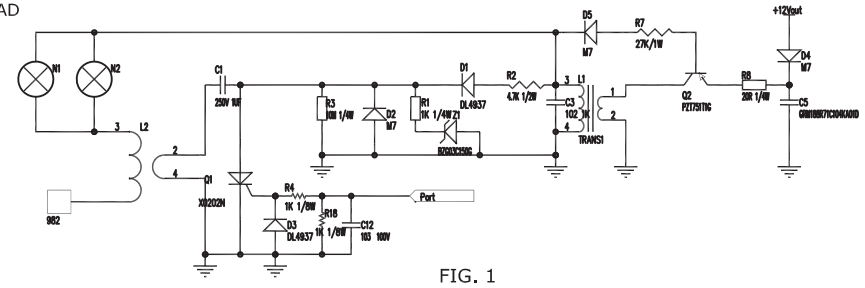
When the test voltage is 220V 50Hz, such as FIG.2 voltage and pulse width.



NOTES:

- 1.PRIMARY: 10± 1/2 TURN 1UEW-0.45;
- 2.SECONDARY: 3420 TURN 1UEW-0.06;
- 3.HYPOT 1250VAC. BETWEEN PRIMARY AND SECONDARY;
- 4.THE USE OF TEMPERATURE - 40~85 ° C;
- 5.FILL MATERIAL: EPOXY,VACUUM FORMED;
- 6.PEAK PRIMARY CURRENT: 60 AMPS;
- 7.ADDITIONAL ELECTRICAL SPEC'S.(FOR REF.ONLY)  
PRIMARY: 0.04 OHMS ± 30%,5uH ± 15%;  
SECONDARY:1150 OHMS ± 30%, 340mH ± 15%;  
MEASURED AT 1KHz,75° F
- 8.SPARK VOLTAGE: ≥15KV(CL=20PF);  
DISCHARGE PULSE:5± 2us;
- 9.OUTPUT TERMINAL BY TENSION TEST,  
DRAWING FORCE GREATER THAN 3kgf.cm;
- 10.OUTPUT TERMINAL WITH A TORSION  
TESTER,TORQUE GREATER THAN 8kgf.cm.

TEST CIRCUIT FOR REFERENCE ONLY



NOTES: AB points between the trigger voltage is 150V

MAP	A4	PAGE	1	FIRST CORNER	PRODUCT	18SS-081	
UNIT	mm	SCALE	1:1		MATERIAL NO.		
				APPROVE	DRAWING NO.		
				CHECK	DRAWING NAME	Finished product	
				DESIGN	DRAWING NO.	1.0	